



Packaging Machinery & Systems
made for you

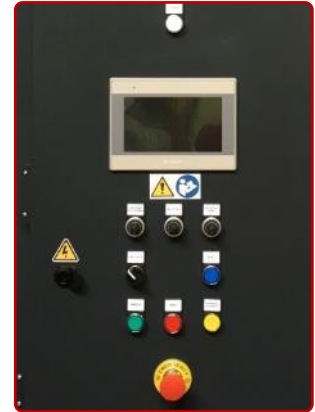
Automatic turntable stretch
wrapper with cutting system and
clamp - Manual pallet loading

500



STANDARD MACHINE TECHNICAL CHARACTERISTICS

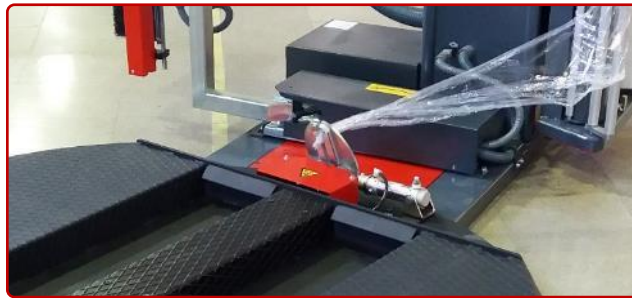
- EAR-FLAP® profile.
- Powered film carriage with variable speed, placed sidewise.
- **Powered pre-stretch 300%.**
- Pneumatic clamp to hold film before the wrapping cycle.
- Automatic film cutting arm .
- Automatic load height detection by photocell.
- Soft start/stop by **SCHNEIDER** frequency inverter with return to start position.
- Wrapping cycles counter.
- Independently adjustable top & bottom reinforcement wraps.
- **SIEMENS** PLC control and colour LCD touch screen.
- Reinforcement wraps at any point in the cycle.
- Ergonomically designed panel control.
- Production **up to 15 pallets/hour** (Variable production depending on the operator and the characteristics of the load.)
- **10 customizable wrapping programs** by the user: Initial wraps, upper and final, overwrap time, etc.



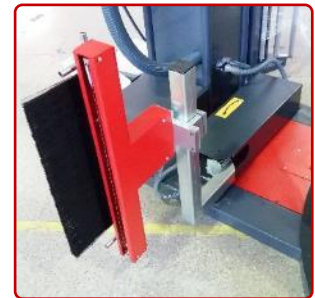
OPTIONS AND ACCESSORIES



Powered pre-stretch 300%



Film clamp

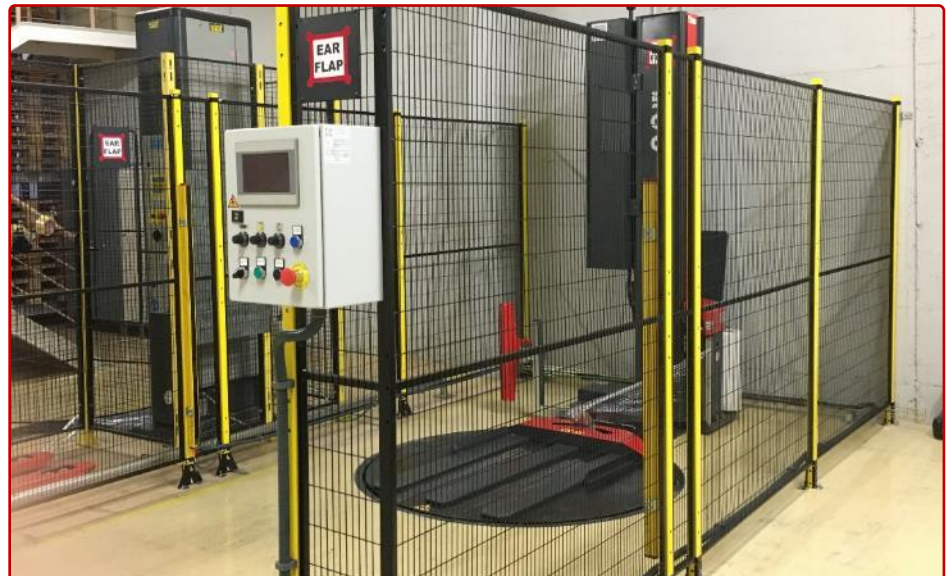


Film cutting arm

Options



Thermo welding (optional)
of direct contact to the load.
It welds the film to prevent it
from being loose.



Perimeter security fencing, mutting anti-intrusion barriers (optional)

OPTIONS AND ACCESSORIES

1. Turntable accessing ramp
2. Embedding frame.
3. Scale with display
4. Powered top platen
5. Top sheet dispenser TDM1800

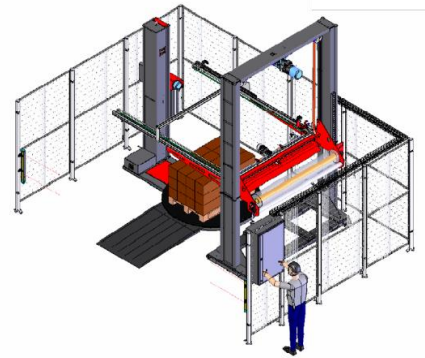
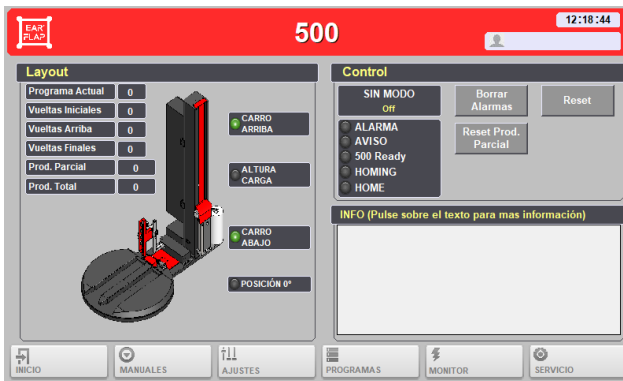


Photo: TDM1800 Front layout.
(compatible with side position)

SPECIAL CUSTOMIZATIONS

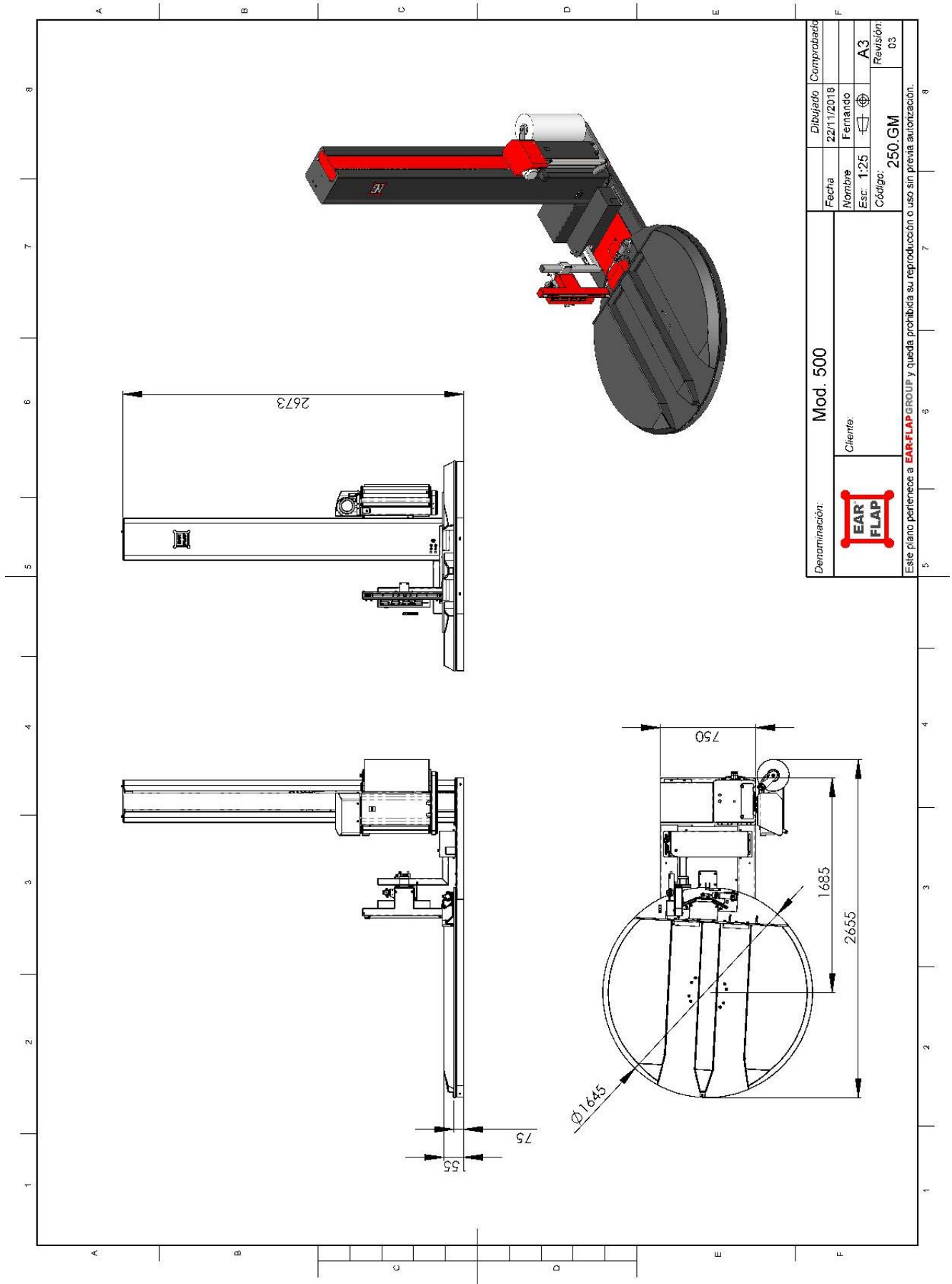
- Ultrasonic detector for black loads
- Stainless steel 304
- ATEX explosive environments
- Environments up to -30°C
- Special heights
- Special platforms
- Ramps and hoists for cargo loading with stackers
- Different pre-stretch ratio 150%, 200%, 300% or 400%



Photos: displays showing the wrapping cycles configuration and information about the machine status.

Technical features	Standard
Maximum height	2.400 mm (other heights on request)
Turntable diameter	Ø 1.650 mm
Maximum pallet and load dimensions	Up to 1.200 x 1.100 mm
Maximum weight	2.000 Kg.
Electrical power	220 - 240 V 50 / 60 Hz
Installed power	1 Kw
Air pressure	6 bar
Film carriage	Powered pre-stretch 300%
Stop in position	Standard
Progressive start/stop with frequency inverter	Standard
Load height detection by photocell	Standard
PLC Siemens with touch screen	Standard

Standard machine layout



Denominación: Mod. 500		Dibujado	Comprobado
Cliente:		Fecha	22/11/2018
		Nombre	Fernando
		Esc.	1:25
		Código:	250.GM
Este plano pertenece a EAR-FLAP GROUP y queda prohibida su reproducción o uso sin previa autorización.		Revisión:	03