



Packaging Machinery & Systems
made for you

Automatic turntable
pallet wrapper

TRM 1500



STANDARD MACHINE TECHNICAL CHARACTERISTICS

- EAR-FLAP® profile.
- Powered film carriage with variable speed, placed sidewise.
- Powered pre-stretch carriage 300% with anti-entanglement and roping system.
- Load height detection by photocell (Optional: detection by ultrasounds for black loads).
- Transmission to the turntable by V-belt.
- Turntable with soft start and indexed stop and **SCHNEIDER** speed inverter.
- 3ALL feature: clamping, cutting and dolly heat sealing.
- Turntable with motorized rollers conveyor.
- Optional: turntable with motorized 3 chains conveyor.
- Wrapping cycles counter.
- Independently adjustable top & bottom reinforcement wraps.
- Independently adjustable roping system to reinforce the load.
- Light and sound indicators for functioning signals and alarms.
- Controlled by **PLC SIEMENS**.
- Panel control with touch screen.
- Production **up to 35 palets/hour** (variable depending on the characteristics of the load, number of wraps, etc.)
- 10 customizable programs: starting, upper and final wraps, overlapping lapse, roping, etc.

Motorized pre-stretch carriage

Motorized pre-stretch carriage 300% with anti-entanglement and roping system (Optional: 150%, 200%, 400% pre-stretch)

Motorized pre-stretch 300% with roping system and electronic regulation (optional)

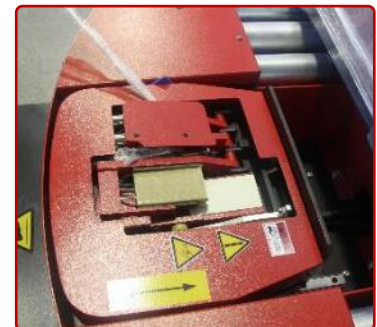
Roping system: this feature provides a rope which can be programmed at different heights of the load to reinforce and stabilize the pallet. Recommended for unstable loads or loads in layers.



3ALL system

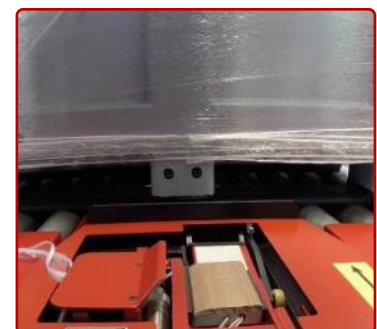
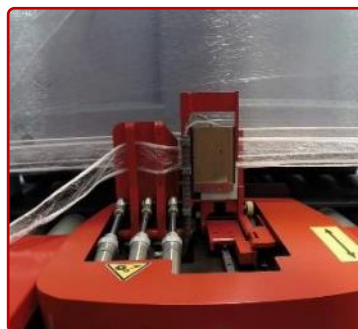
Thanks to this system, the 3 independent external mechanical elements are replaced and integrated in just one single unit, which performs the same 3 functions: clamping, cutting and dolly heat sealing.

Also, a rope in the film is made in the final stage, which allows the heat sealing of any kind of film (stretchable, microperforated, etc.) and with any thickness, thus avoiding the loose tail of film which appears without this system. This system also avoids its mechanical maintenance, as it does not have any obstacles.



No minimum wrapping height required

Thanks to the combination of the different features in the 3ALL system, there is no minimum load height required to wrap the complete pallet down to the bottom deck board.



Control panel and electrical enclosure

Touch control screen

The wrapper has a user-friendly and intuitive touch control screen which facilitates the operations and settings of the machine. All possible parameters are programmed, as well as the movements and interconnections. Different user profiles can be set through password access.



Electronic control

The wrapper is controlled by a **Siemens PLC** which is integrated in an electrical board, which makes its future maintenance and spare parts replacement much easier and cost-saving, in comparison with different electronical boards offered by other manufacturers.

Electrical enclosure

It is coupled to the wrapper column to centralize inside all the interconnections and to ease its transportation.

The cabinet, besides the own connections of the machine, has enough space for additional interconnections, such as for conveyors, palletizers, etc.



OPTIONS AND ACCESSORIES

Powered top platen

It holds the load at the top of the pallet without deforming it while the pallet is being wrapped avoiding the risk of the product collapse.

Top Cover Dispenser TDM1800 (Optional)

Accessory which allows to dispense a cover of film to do a complete wrapping. Depending on the position and the functioning cycle of the machine, the wrapping will provide a dust or rain protection.



TRM1500 turntable with motorized chains conveyor (Optional)

The turntable of the machine can include a chains conveyor (3 or 5 chains depending on the size and type of pallets to be wrapped), which is necessary for a side transportation of the pallet



Photo: TRM1500 turntable with motorized 3-chain conveyor

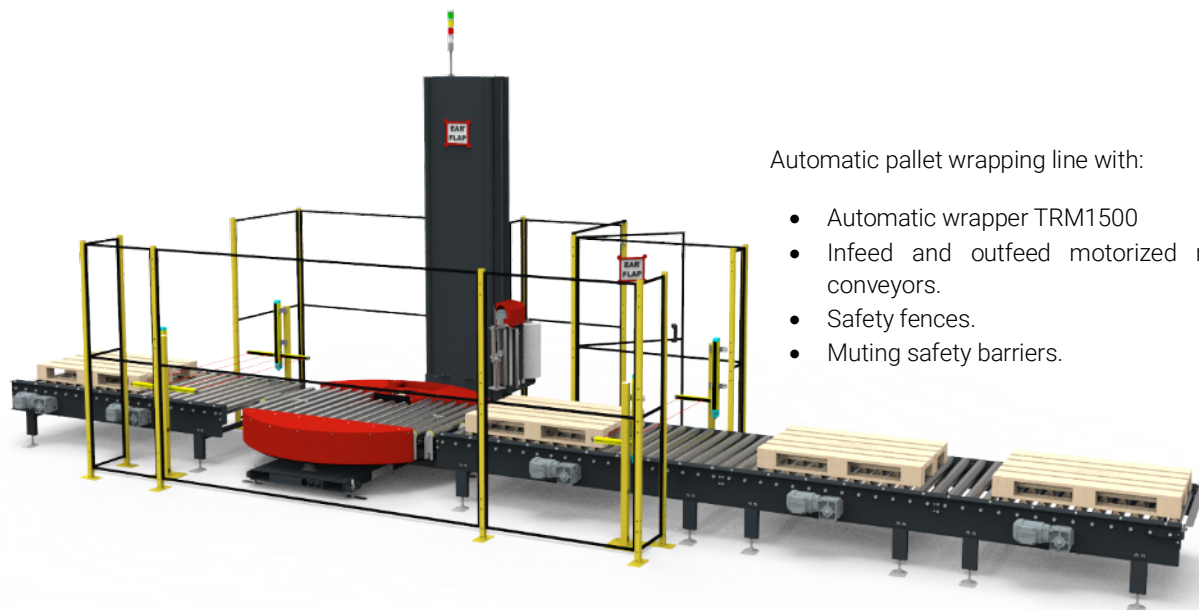


Photo: TRM1500 turntable with motorized 5-chain conveyor

Special environments (explosive environments, corrosion, sub-zero, ...)

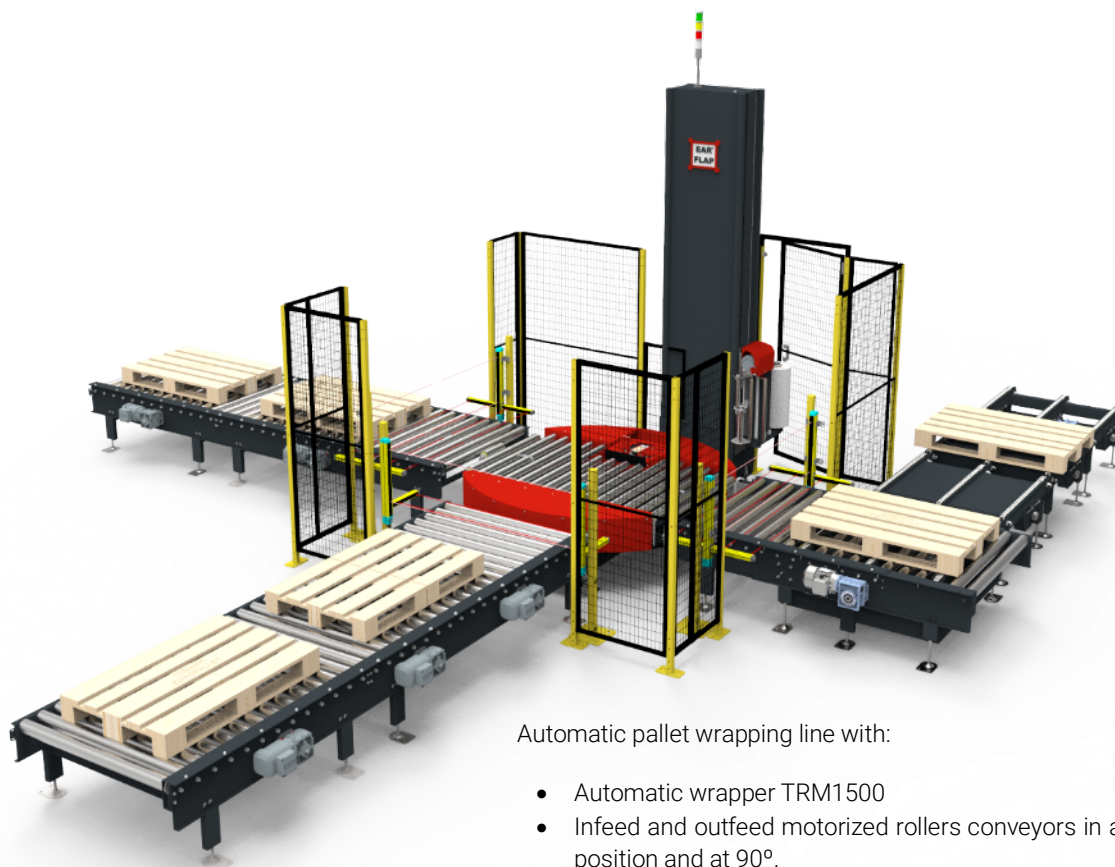
We have experience and we can provide proven solutions for explosive environments (ATEX), corrosive environments (Stainless Steel) or sub-zero temperatures (down to -30 °C).

Examples of automatic wrapping lines:



Automatic pallet wrapping line with:

- Automatic wrapper TRM1500
- Infeed and outfeed motorized rollers conveyors.
- Safety fences.
- Muting safety barriers.



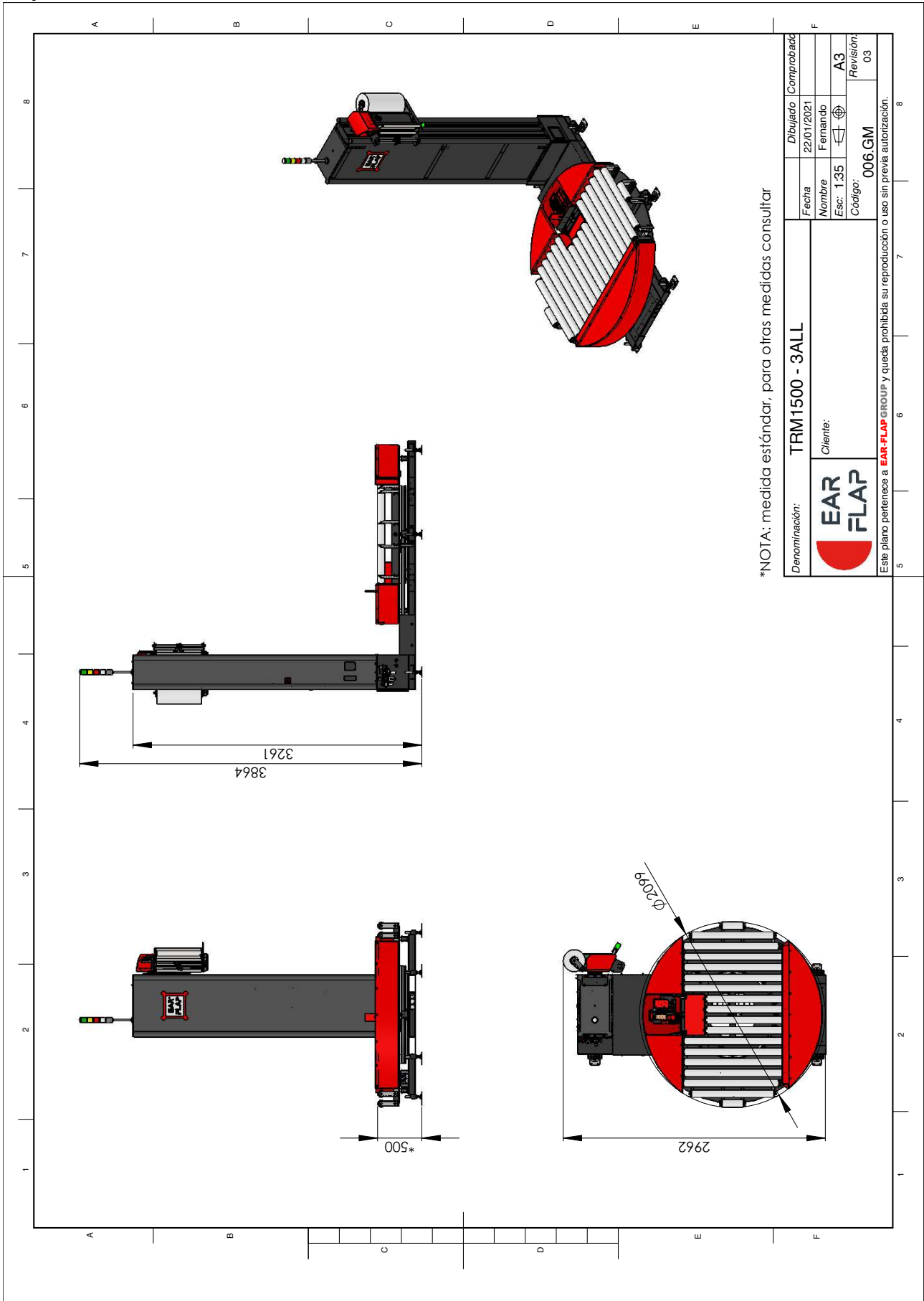
Automatic pallet wrapping line with:

- Automatic wrapper TRM1500
- Infeed and outfeed motorized rollers conveyors in a straight position and at 90°.
- Motorized rollers/chains conveyor.
- Safety fences.
- Muting safety barriers.

| Stretchable film specifications | |
|--|---|
| External Ø: | 240 ± 250 mm |
| Inside Ø: | 76 mm |
| Reel height: | 500 mm |
| Thickness: | 17 – 50 µ |
| Max. weight: | 20 kg |
| Electric features | |
| Electrical power: | 400 V III + N + TT 50 Hz |
| Installed power: | 4 Kw |
| Electrical protection: | IP 54 |
| Wiring protection: | Tube and/or tray |
| Compliant with | EN 60 204-1, EN 60 617 |
| Pneumatic features | |
| Compressed air infeed: | 6 bar |
| Compressed air consumption: | 9 l / cycle + 60 l/blown sec. |
| Other characteristics | |
| Noise level; | 70 dB (A) |
| Standard main components | |
| HMI: | LCD touch screen |
| PLC: | SIEMENS |
| Pneumatic component: | SMC |
| Frequency inverters: | SCHNEIDER |
| Motors and gearmotors: | TRANSTECNO or similar |
| Other elements or brands on request (it can add an extra cost) | |
| Colors | |
| RAL fixed parts: | 7016 (Dark Grey) |
| RAL moving parts: | 3020 (Red) |
| RAL protections: | Fence: 9011 (Black), Posts: 1018 (Yellow) |
| Other colors on request (it can add an extra cost) | |

| Technical features | Standard | Optional |
|---|-----------------------------------|---------------------------------|
| Maximum height | 2.400 mm | 2.800 mm and special requests |
| Turntable | Motorized rollers conveyor | Motorized 3 or 5-chain conveyor |
| Pallet maximum dimensions | Up to 1.200 x 1.000 mm | Consult |
| Maximum weight | 2.000 Kg. | Consult |
| Film carriage | Pre-stretch 300% with rope system | Pre-stretch 300% |
| Stop in position | In a straight line | 90° |
| Soft start/stop with frequency inverter | Standard | Standard |
| Load height detection by photocell | Standard | Ultrasounds |

Layout of the standard machine



*NOTA: medida estándar, para otras medidas consultar