



Packaging Machinery & Systems
made for you

Automatic turntable
wrapper machine

TRM500



STANDARD MACHINE TECHNICAL CHARACTERISTICS

- EAR-FLAP® profile
- Powered film carriage with variable speed, placed sidewise.
- Powered pre-stretch 300% with foot trapping detector
- Automatic load height detection by photocell.
- Soft start/stop by **SCHNEIDER** frequency inverter with return to start position
- Pneumatic clamp to hold film before the wrapping cycle.
- Automatic film cutting arm.
- Turntable with motorized rollers conveyor
- Turntable with motorized 3 chains conveyor (optional)
- Wrapping cycles counter.
- Reinforcement wraps at any point in the cycle.
- Controlled by **PLC SIEMENS**
- HMI touch screen.
- **Up to 20 pallets/hour** (variable output depending on the load features, number of wraps, etc.)
- 10 Programs customizable by the user: Initial, top and bottom wraps, upper overlapping timing, cycle types, etc.



ADD-ONS AND ACCESSORIES



Powered pre-stretch 300%



Blowers initial film



Pneumatic clamp to hold the film



Automatic film cutting arm

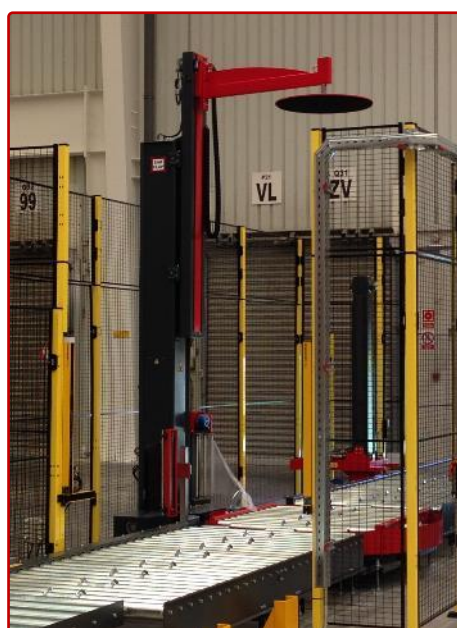
Options



Heat welding (optional) of direct contact to the load. Solder the film to prevent it from being loose.



Especial environments (Atex, Corrosive or -0°C)



Powered top platen (optional)



Top sheet dispenser TDM1800 (optional)

Due to a continuous development and progress policy, EAR-FLAP® GROUP reserves the right to modify the features and specifications without notice. This document shall not be deemed a contract. Its total or partial reproduction is forbidden. Authorised by GMC.

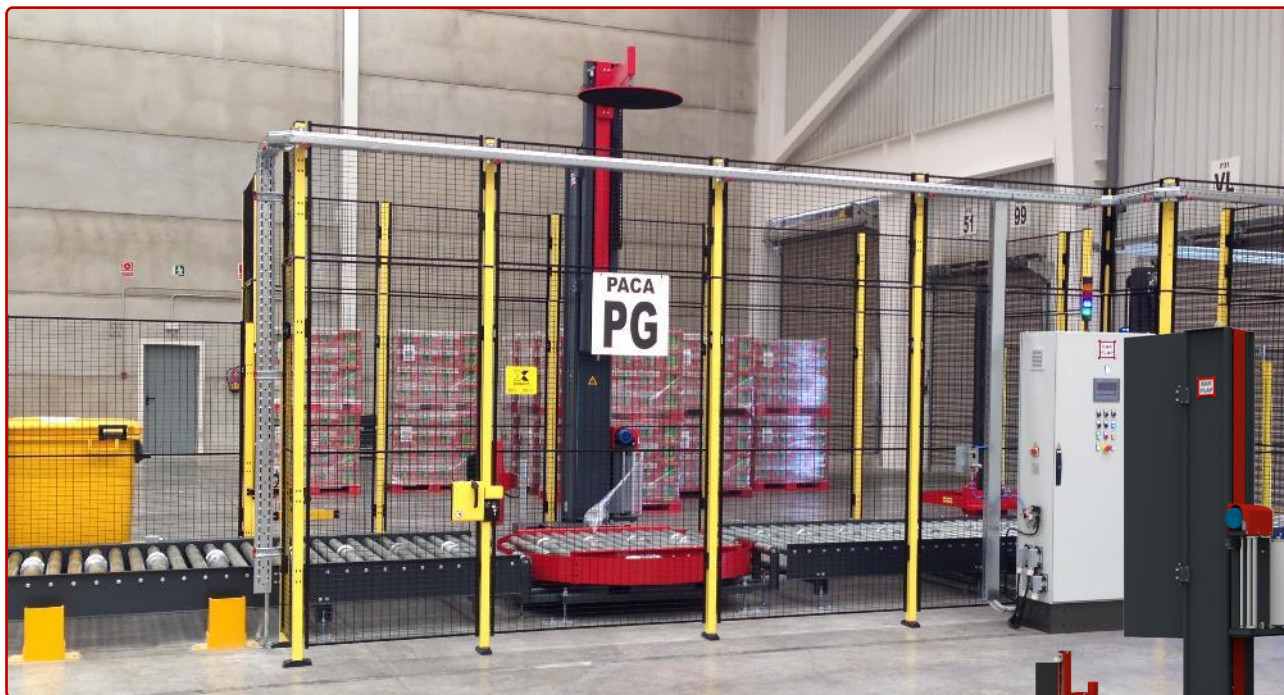


Photo: TRM500 with motorized rollers conveyors

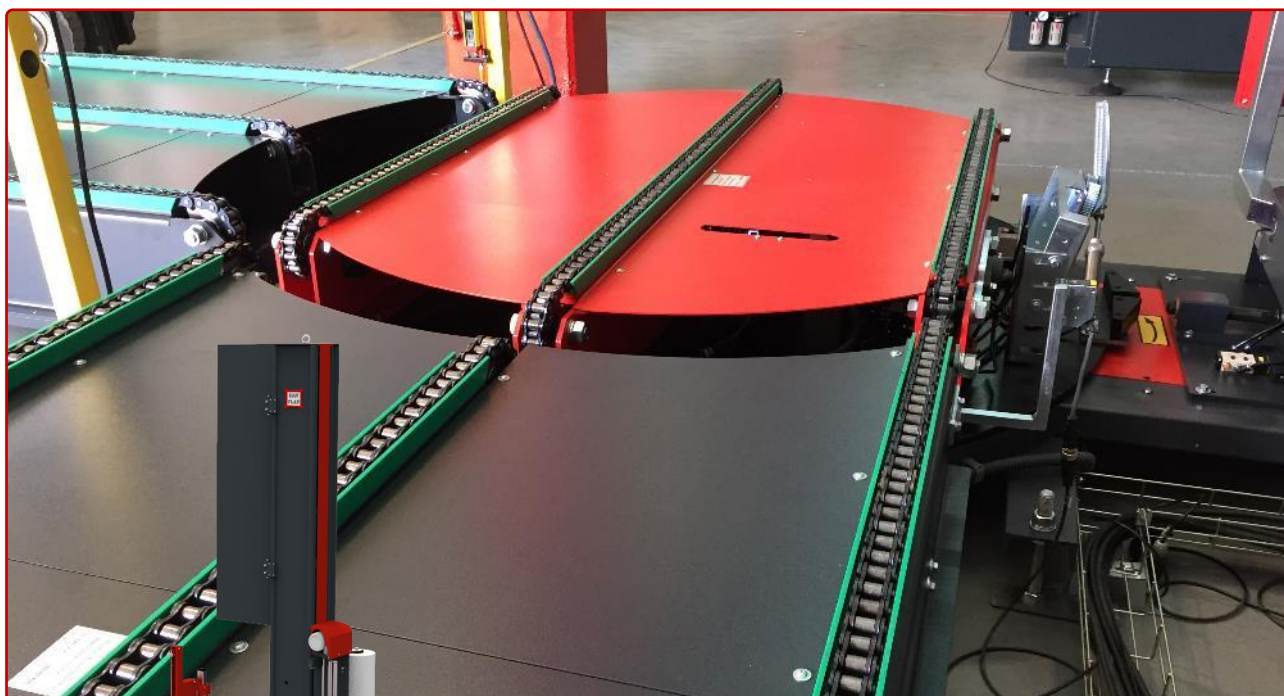


Photo: TRM500 with motorized 3 chains conveyor





Photo:

Automatic wrapping line with:

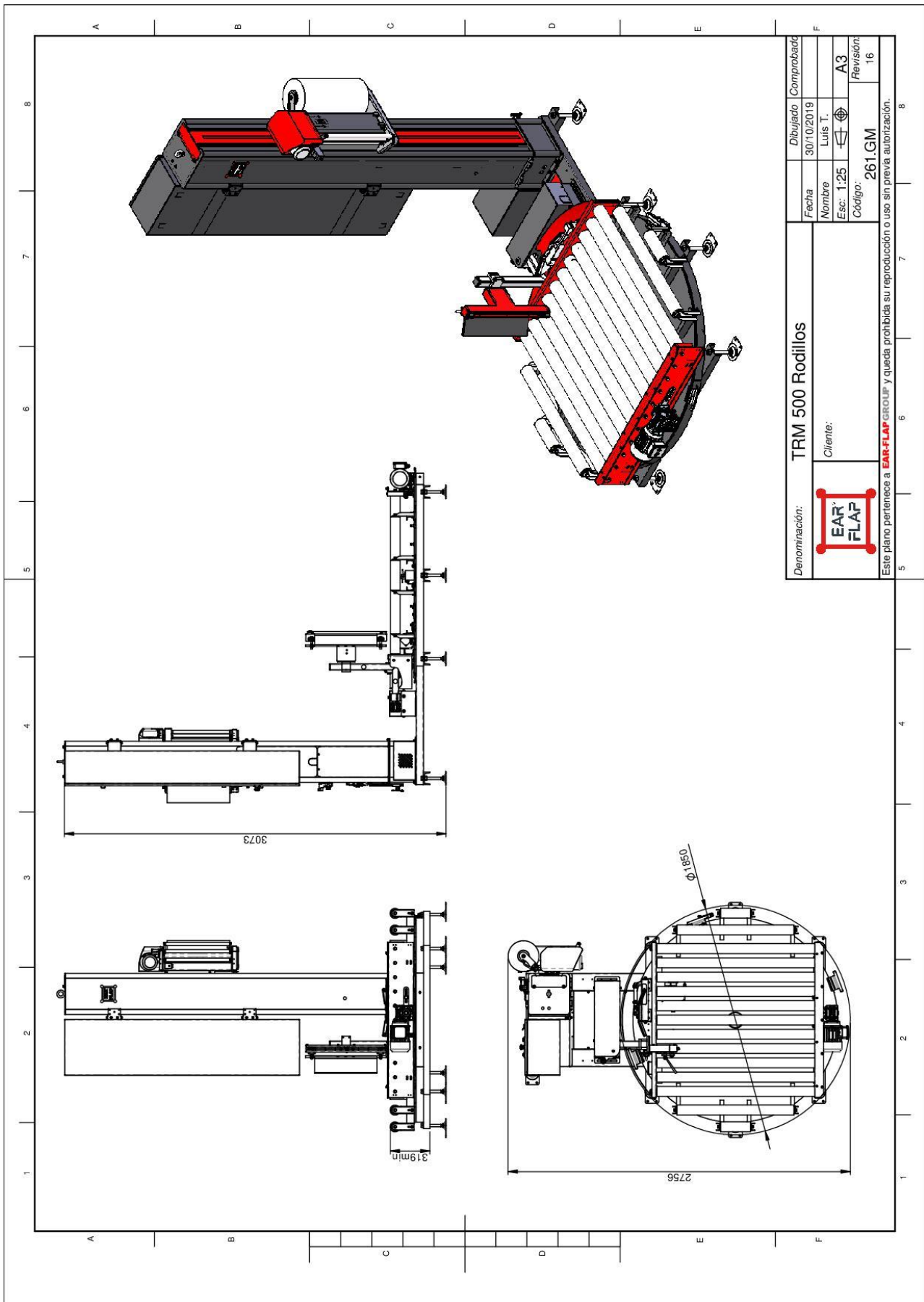
- Automatic wrapper machine TRM500
- Top sheet dispenser TDM1800
- Infeed/outfeed motorized rollers conveyors
- Security fences
- Muting safety barriers
- Electric cabinet and operator terminal



Characteristics of the stretch film	
Ø outside:	240 ± 250 mm
Ø inside:	76 mm
Coil height:	500 mm
Film thickness:	17 – 50 µ
Maximum weight:	20 kg
Electrical features	
Electrical power	400 V III + N + TT 50 Hz
Installed power	2 Kw
Degree of isolation:	IP 54
Protection of wiring:	Tube and/or tray
Rules applied:	EN 60 204-1, EN 60 617
Pneumatics features	
Compressed air supply:	6 bar
Compressed air consumption:	9 l / cycle
Others features	
Noise level:	70 dB (A)
Main standard components	
HMI:	LCD touch screen
PLC:	SIEMENS
Pneumatics components:	SMC and Airtac
Inverters:	SCHNEIDER
Motors and gearmotors:	TRANSTECNO or compatible
Other components or brands on demand (it can add an extra cost)	
Colors	
RAL fixed parts:	7016 (Dark grey)
RAL mobile parts:	3020 (Red)
RAL fences:	Panels: 9011 (Black), Posts: 1018 (Yellow)
Other components or brands on demand (it can add an extra cost)	

Technical Characteristics	Standard	Optional
Maximum height	2.400 mm	2.800 mm and specials
Turntable	With motorized rollers conveyor	With motorized 3 chains conveyor
Maximum dimensions pallet and load	Up to 1.200 x 1.000 mm	Consult
Maximum weight	1.200 Kg.	Consult
Electrical power	400 V III + N + TT 50 Hz	400 V III + N + TT 50 Hz
Installed power	2 Kw	2 Kw
Film carriage	Powered pre-stretch film 300%	Powered pre-stretch film 300%
Stop in position	In line	90°
Start/stop frequency inverter	Standard	Standard
Load height detection by photocell	Standard	Standard

Layout standard model TRM500 with motorized rollers conveyor



Layout standard model TRM500 with motorized 3 chains conveyor

