



Packaging Machinery & Systems  
made for you

Semiautomatic turntable  
wrapper

**600TP**



### STANDARD MACHINE TECHNICAL CHARACTERISTIC

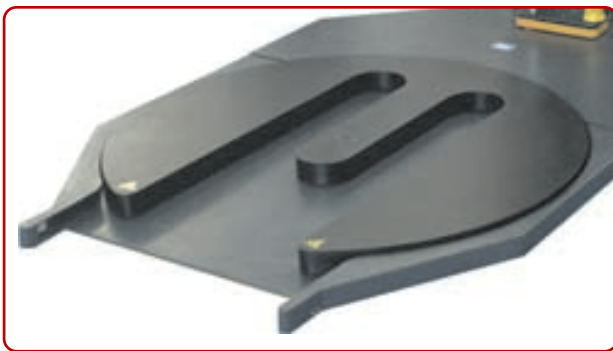
- Hinged mast.
- Powered film carriage with variable speed, placed sidewise.
- Adjustable mechanical film brake with foot trapping detector.
- Automatic load height detection by photocell.
- Turntable dimensions : Ø1.500 mm.
- **Open turntable** to load the pallet directly with a forklift
- Soft start/stop by **SCHNEIDER** frequency inverter with return to start position.
- 4 wrapping programs: Single / Cross-wrap/ Cross-plus / Full.
- Wrapping cycles counter.
- Independently adjustable top & bottom reinforcement wraps.
- PLC controlled, with display control panel.
- Independent ascent and descend carriage speed for film saving.
- Reinforcement wraps at any point in the cycle.
- Variable production depending on the operator and the characteristics of the load.



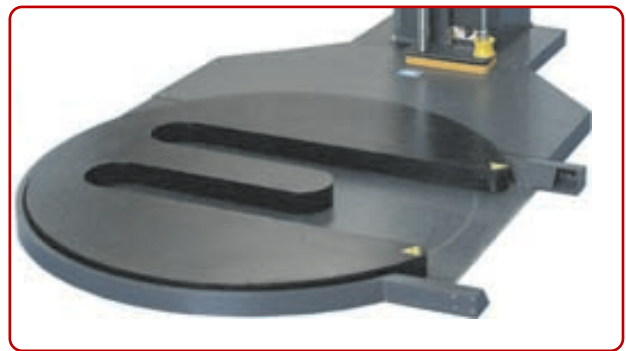
**FMA carriage**  
Adjustable mechanical film brake with foot trapping safety



**PEM carriage**  
Powered pre-stretch 300% with foot trapping detector



Model 600TP-F: Front loading



Model 600TP-L: side loading

### Optional



**Special working conditions**  
Explosives: ATEX



**Powered top platen**  
Machine with powered top platen included for light or unstable loads

## OPTIONS AND ACCESSORIES

1. Direct film brake
2. Mechanical film brake (standard)
3. Electromagnetic brake
4. Powered pre-stretch film 300%
5. Twin film holder
6. Powered top platen

## SPECIAL CUSTOMIZATION ON DEMAND

- Ultrasonic detector for black loads
- Stainless steel 304
- ATEX explosive environments
- Special heights
- Special platforms
- Different pre-stretch ratios 150%, 200%, 300% or 400%
- Carriages for 750 mm or 1.000 mm height film
- PLC extended up to 10 programs
- ...



Technical features	Standard	Optional
Maximum height	2.400 mm	2.800 mm and specials
Turntable diameter	Ø 1.500 mm	Consult
Maximum dimensions pallet and load	Up to 1.200 x 800 mm	Consult
Maximum weight	1.000 Kg.	Consult
Electrical power	220 - 240 V 50 / 60 Hz	220 - 240 V 50 / 60 Hz
Installed power	1 kW	1 kW
Film carriage	FMA	PEM
Stop in position	Standard	Standard
Start/stop frequency inverter	Standard	Standard
Load height detection by photocell	Standard	Standard
PLC with display	Standard	Standard

### Standard machine layout

